



GAT MONTHLY MEMBERSHIP PROGRESS REPORT

Results as of: 10/31/2021

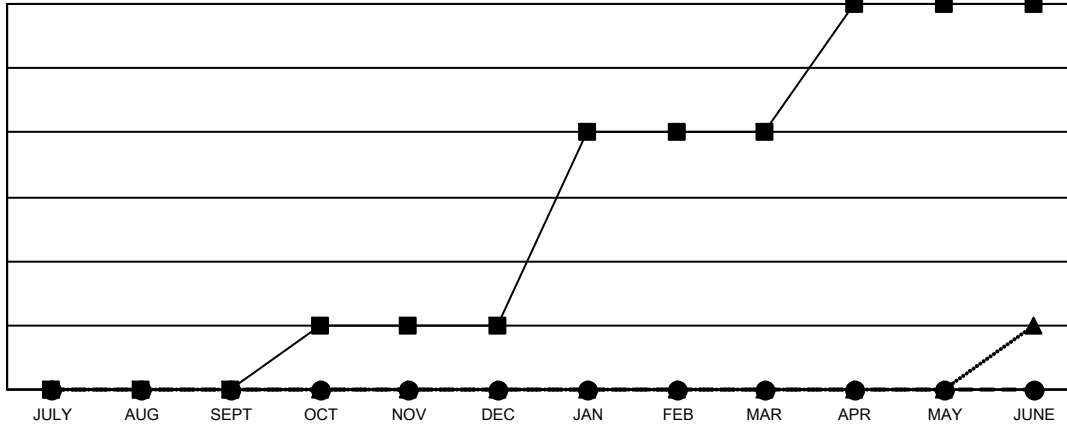
Multiple District 24

LOCATION: VIRGINIA

Clubs			
RESULTS FOR 2021-2022			
QUARTER	NEW CLUB GOAL	NEW CLUBS	DROPPED CLUBS
JULY/AUG/SEPT	0	0	5
OCT/NOV/DEC	1	0	0
JAN/FEB/MAR	3	0	0
APR/MAY/JUNE	2	0	0

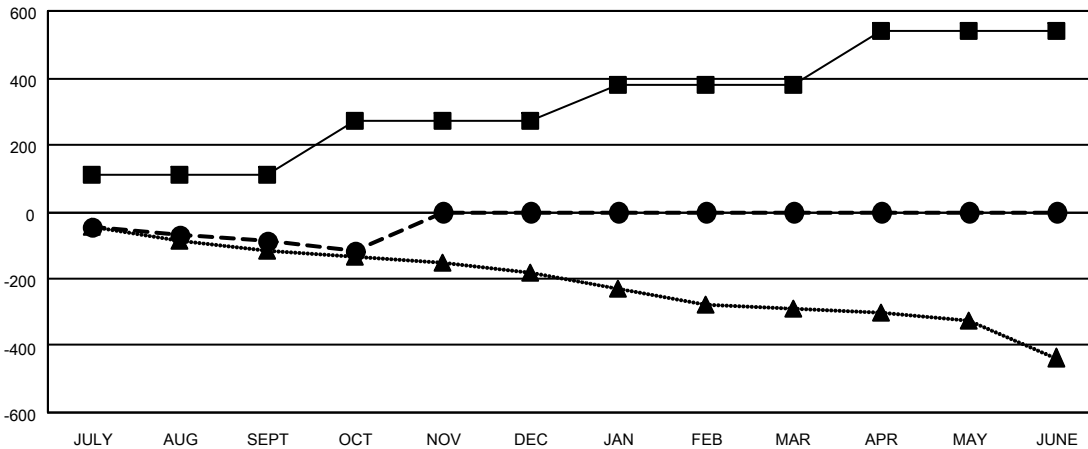
Members			
RESULTS FOR 2021-2022			
QUARTER	MEMBER GROWTH NET GOAL	MEMBER GROWTH ACTUAL	DROPPED MEMBERS ACTUAL (including transfers)
JULY/AUG/SEPT	110	172	225
OCT/NOV/DEC	160	46	71
JAN/FEB/MAR	110	0	0
APR/MAY/JUNE	160	0	0

GOALS AND ACTUAL NEW CLUBS CUMULATIVE



- CURRENT YEAR GOALS FOR NEW CLUBS
- CURRENT YEAR ACTUAL NEW CLUBS
- ▲- LAST YEAR ACTUAL NEW CLUBS

GOALS AND ACTUAL MEMBERS CUMULATIVE



- MEMBER GROWTH NET GOAL
- MEMBER GROWTH ACTUAL
- ▲- LAST YEAR MEMBERSHIP ACTUAL

DROPPED CLUBS: 5	75 CLUBS OF 243 ADDED 1 OR MORE NEW MEMBERS	GENDER DISTRIBUTION	
DROPPED MEMBERS		MALE	3,715 (64.86%)
DECEASED	47	FEMALE	2,013 (35.14%)
CLUB CANCELLED	28	NON BINARY	0 (0.00%)
OTHER	219	PREFER NOT TO ANSWER	0 (0.00%)
TOTAL	294	TOTAL FAMILY UNIT MEMBERS 1,007	
CLICK HERE FOR CUMULATIVE MEMBERSHIP DATA		FAMILY MEMBERS PAYING HALF DUES 507	